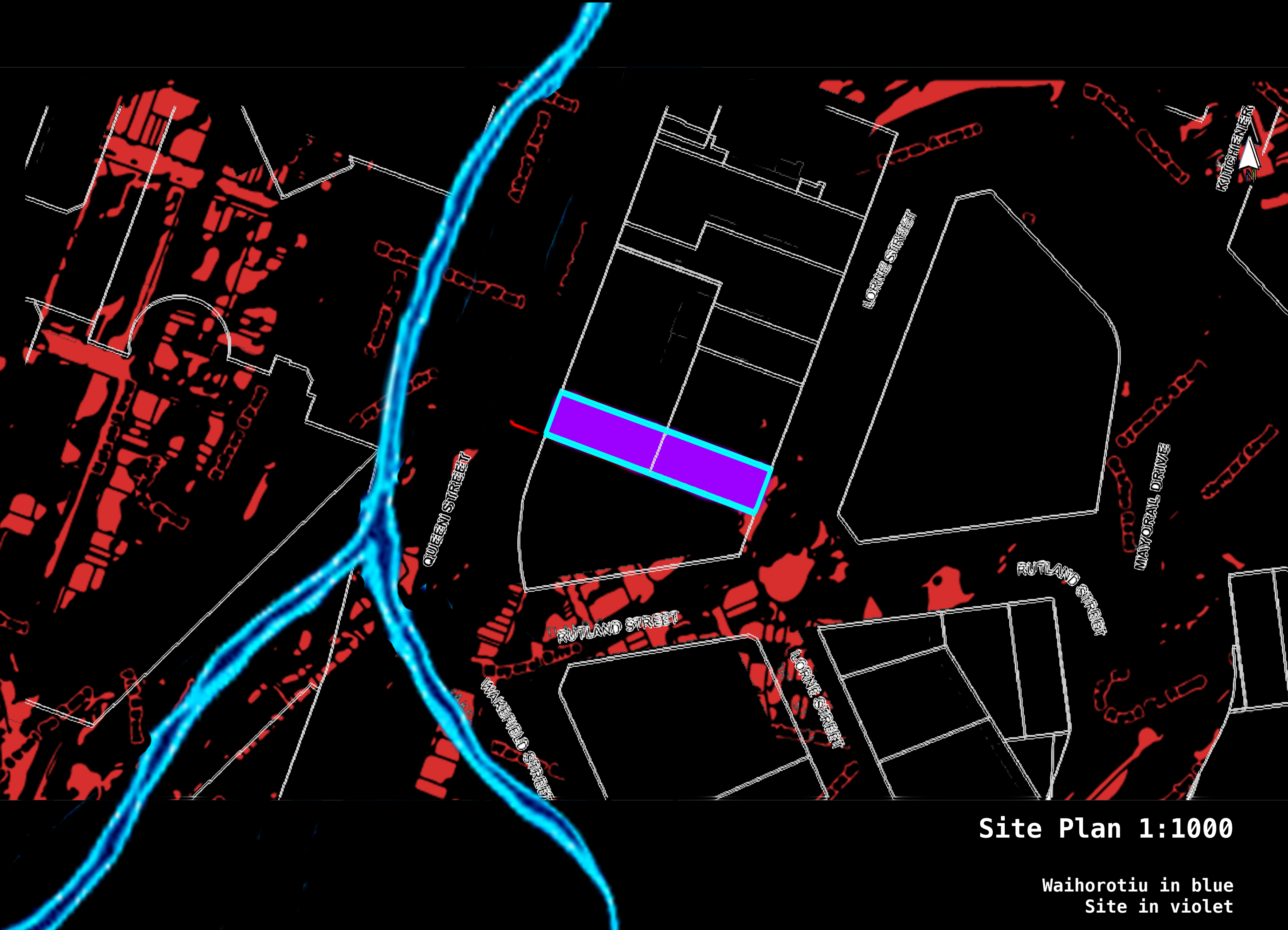


jagged vibrant colours

Madalena Refiti

18036709



Site Plan 1:1000

Waihorotiu in blue
Site in violet



ABSTRACT | PITCH

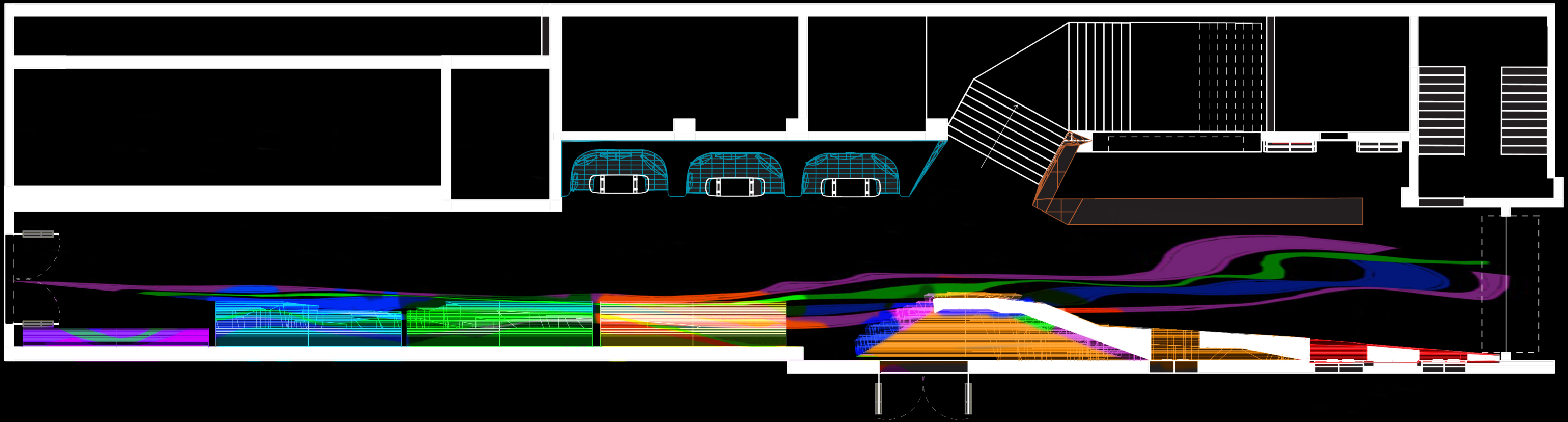
My design intervention is a light installation which highlights connectivity in the city, and runs right throughout the linear lobby that connects Upper Lorne St to Queen St. The re-opened lobby can be used as a shortcut from the library to the Civic and Event Cinemas. The installation will run along the full length of the south wall, and if the theatre is ever re-opened, it provides a contemporary celebratory entranceway.

The intention of the installation design is to portray the idea of movement, speed and fluidity in the space, flowing like a river. Colour, light and blurring effects will create the idea of constant flow through the linear space. I have used a rainbow colour palette - some applied and some integrated into the material and some with (programmed and moving) light. There are 'pools' of pause along the long corridor, with soft booth (back-lit) seating and a cafe/bar on either side of the stairs and existing landing.

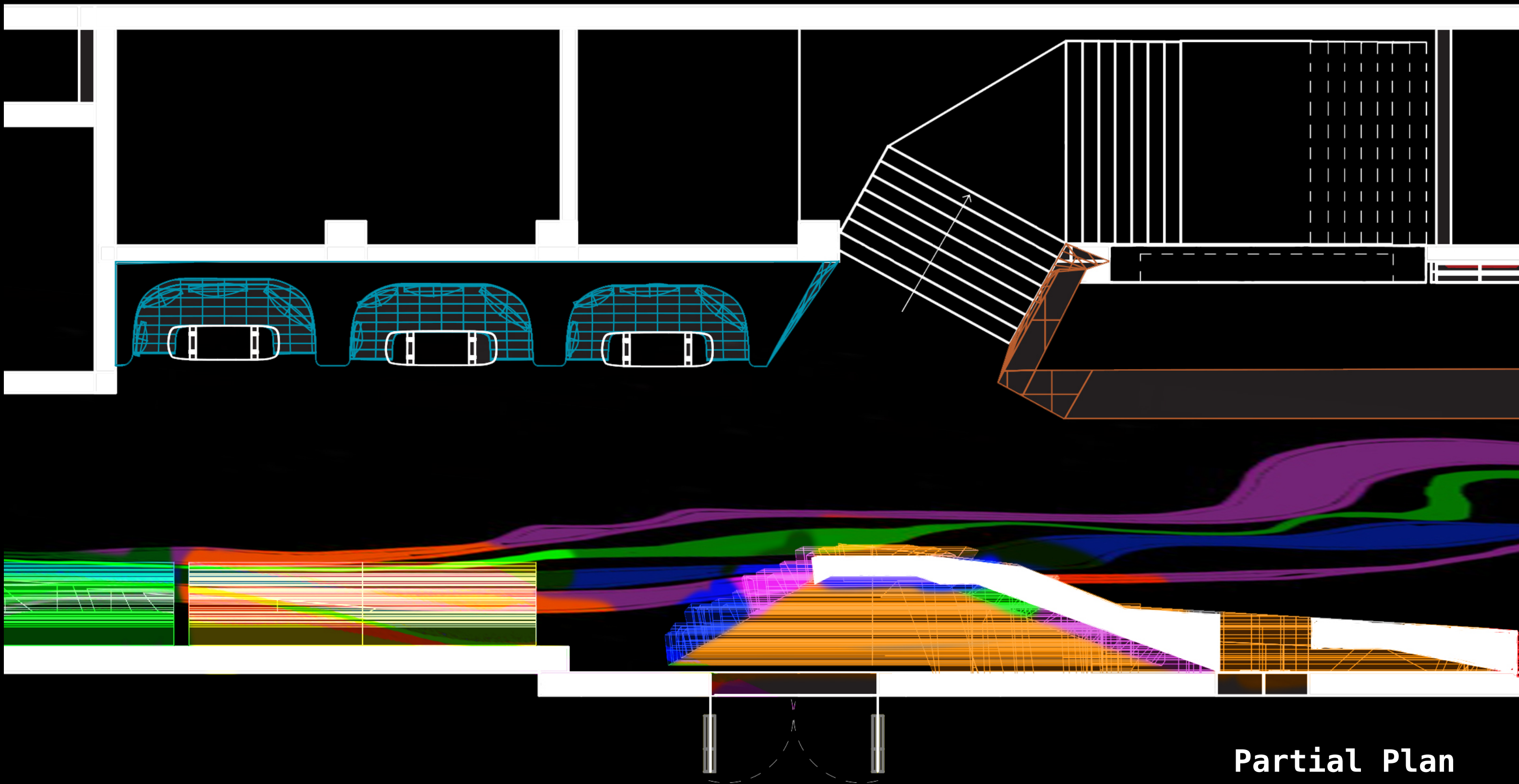
My artist model is Michael Hayden, a Canadian artist who is noted for his artworks incorporating neon lighting and a rainbow/multicolour palette. I have experienced one of his artworks at the O'Hare airport in Chicago, and the spatial effects of colour, vibrancy and energy had an effect on me. I related the flow of people within the airport space to the strong colour, light and forms, and my light installation is inspired by the vibrancy of his large scale works.

Materials used on the main feature wall are a combination of coloured LED lighting, coloured acrylic/polycarbonate panels and aluminium (powder coated) box components. Light is effective when being reflected, so there are many reflective surfaces for the feature wall, floor and ceiling. The floor is black granite, with a coloured epoxy poured flooring product set into fluid shapes.

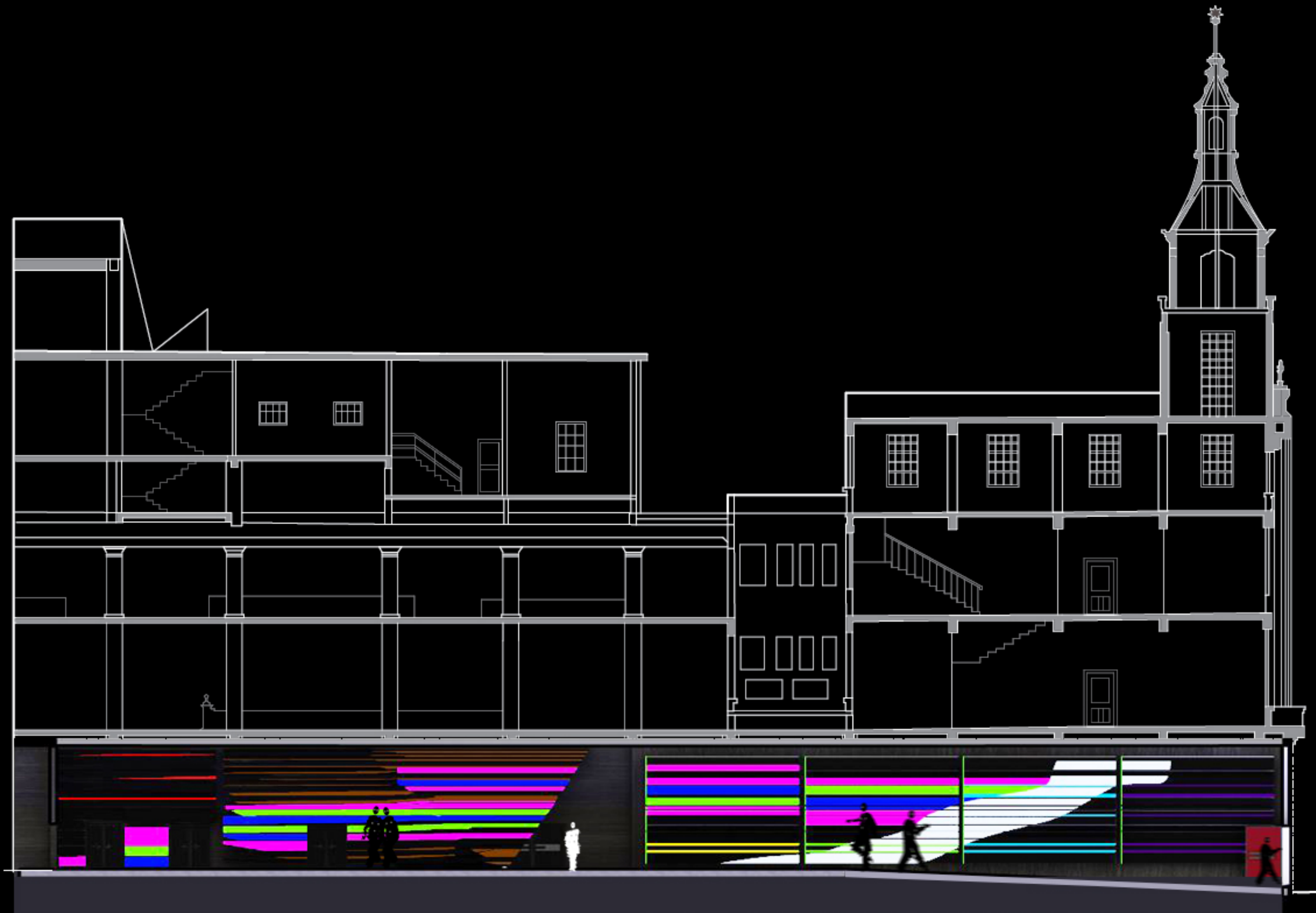
The texture of the existing heritage building is retained and revealed in places, and contrasts with the undoubtedly contemporary design intervention. For example I love the highly textured and patterned existing ceiling panels and these are installed on the north wall and ceiling, set alongside shiny, smooth, contemporary materials. The edges of the existing staircase have been re-shaped with jagged design elements to exaggerate the effect of it interrupting the fast flow of movement.



Proposed Floor Plan
1:100



Partial Plan



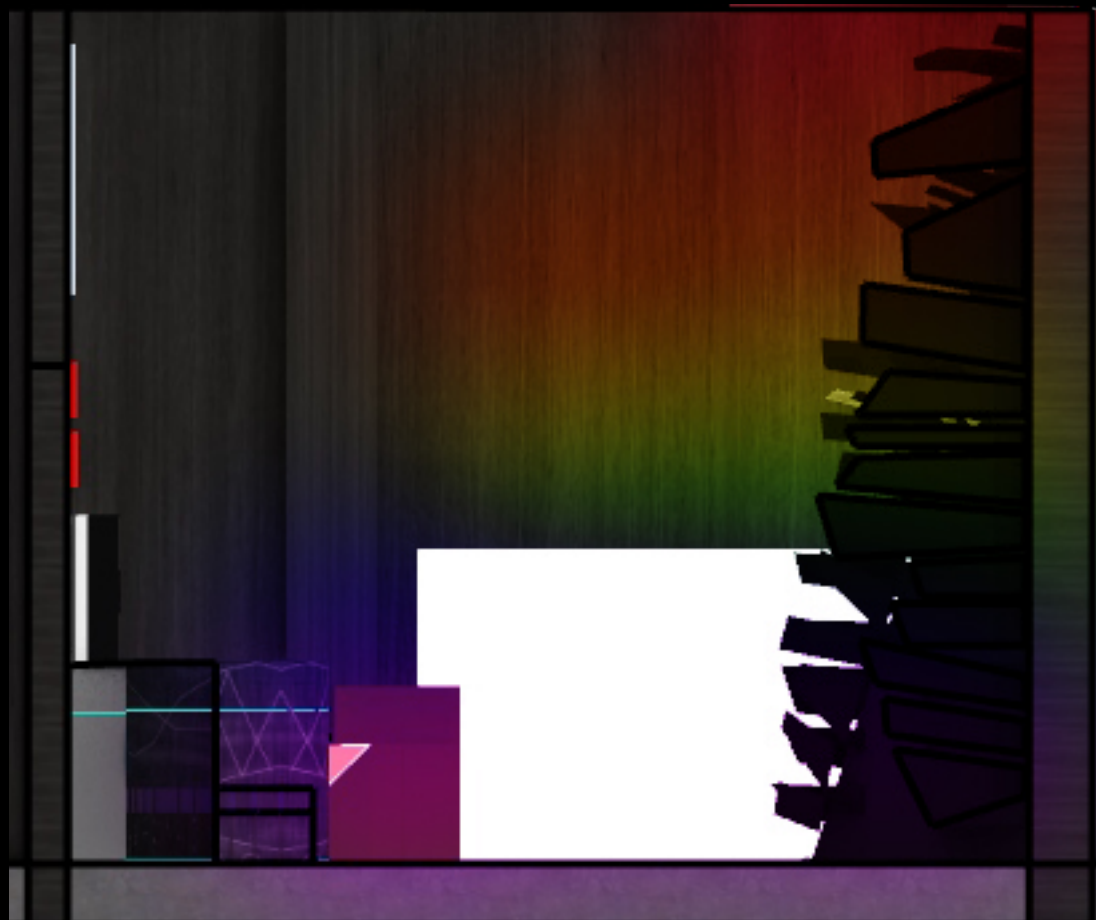
Longitudinal Section A (1:100)



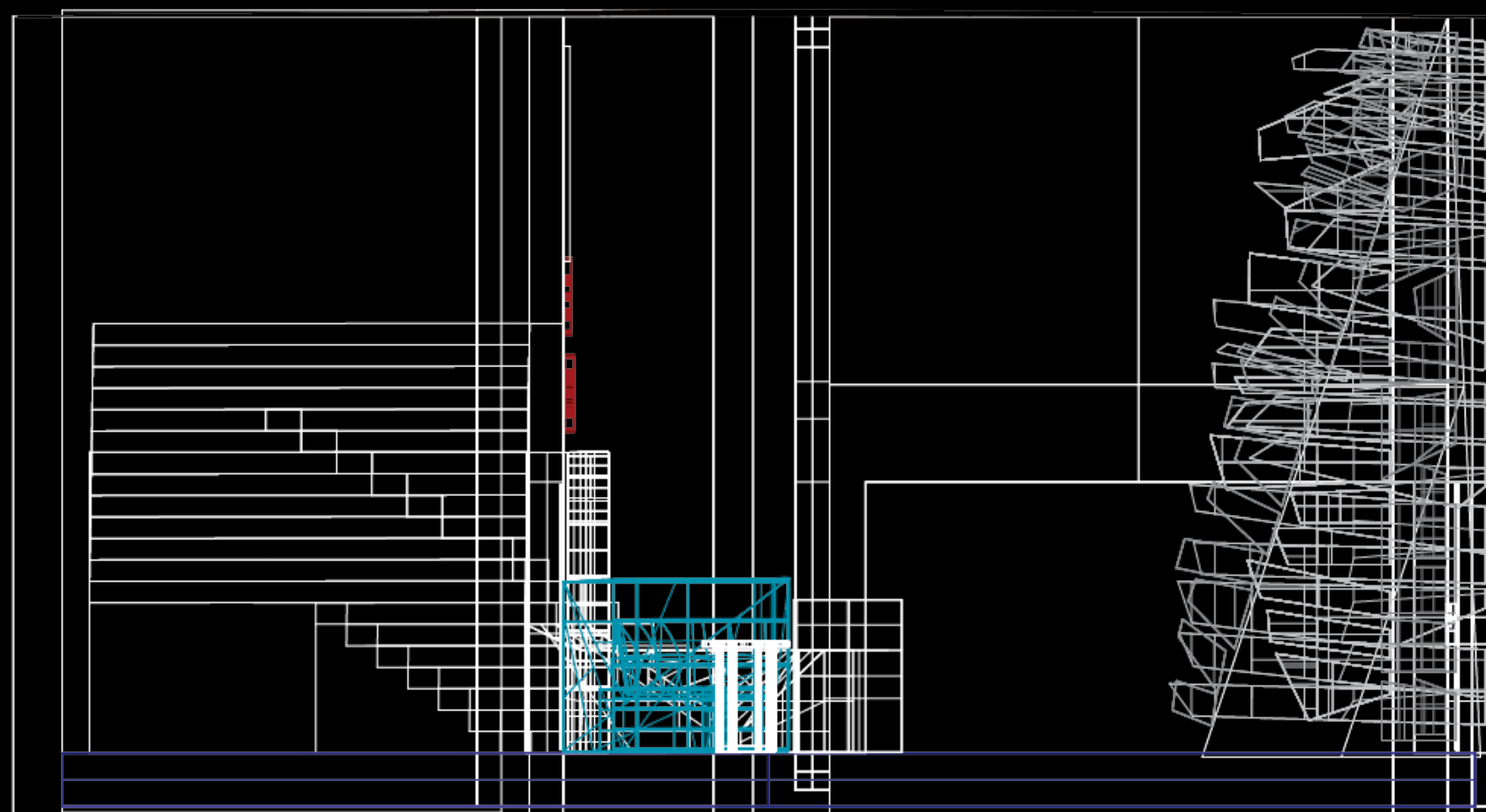
Longitudinal Section B (1:100)



Cross Section C



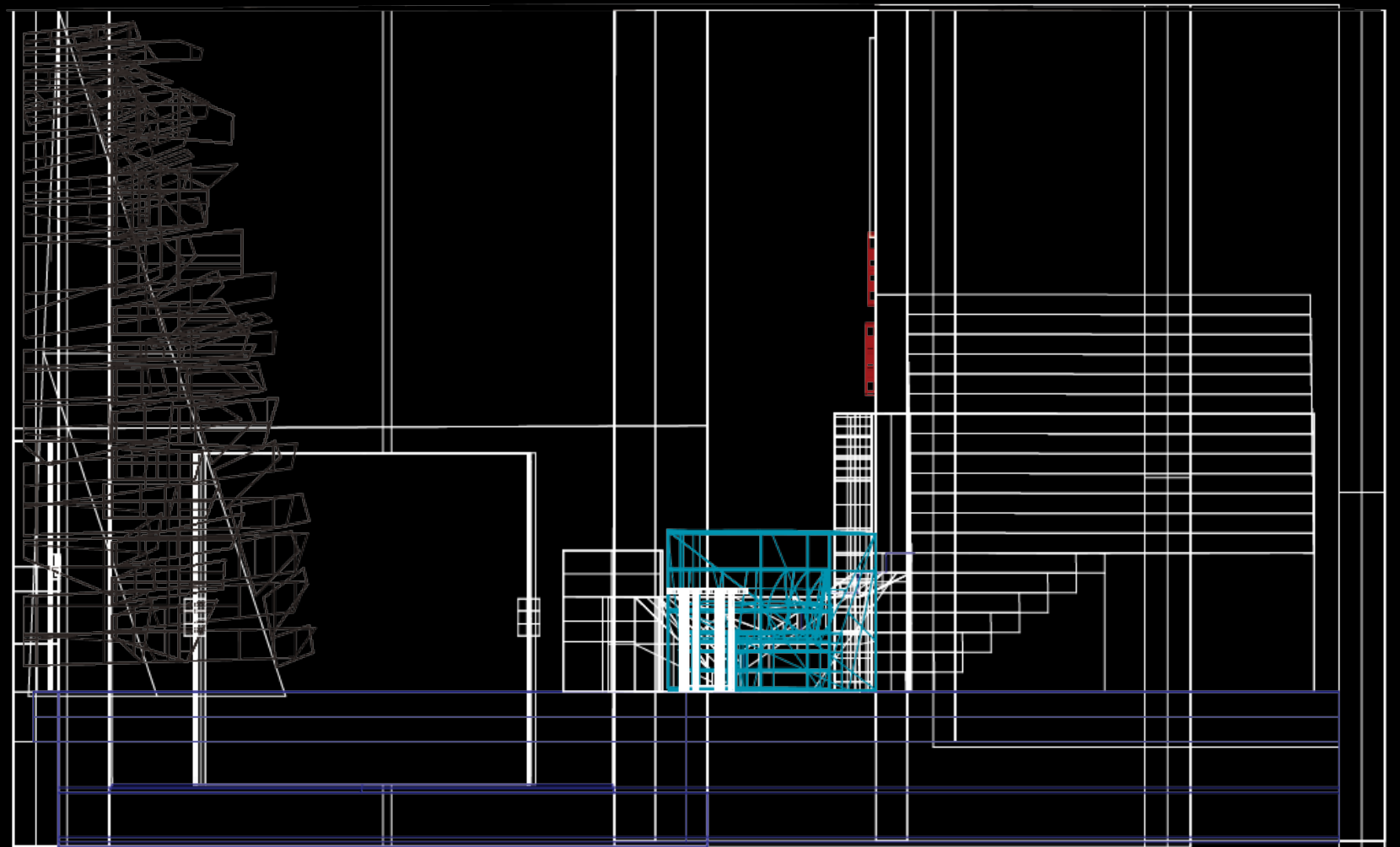
Cross Section C Rendered



Cross Section C Wireframe



Cross Section D Rendered



Cross Section D Wireframe



Artist Model Colour and Inspiration:
Michael Hayden
'Sky's the Limit' 1987



Design Precedent:
Kengo Kuma
V&A Dundee Museum 2018

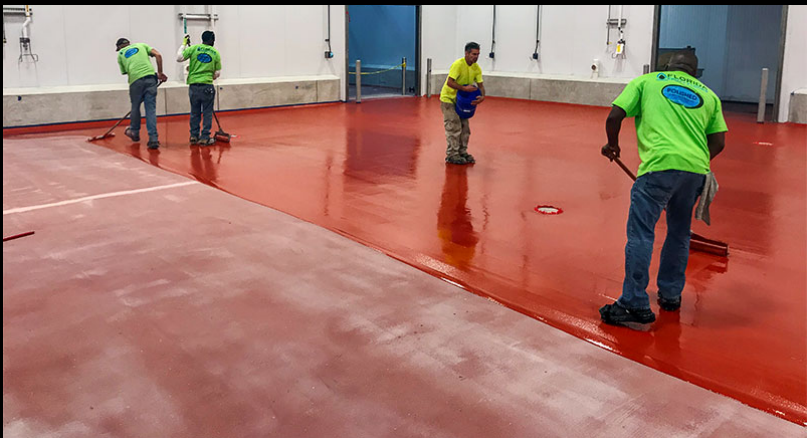
Material Palette



Existing Ceiling Tiles
Repainted Black Gloss



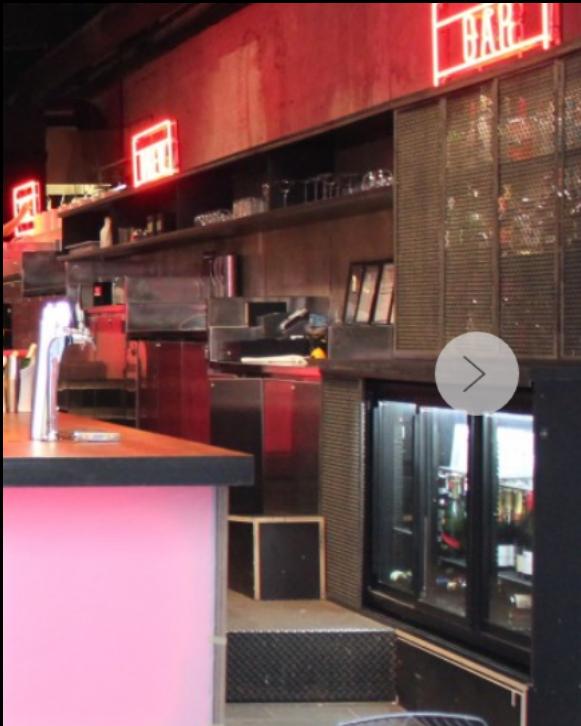
Black Granite



Coloured Epoxy Flooring

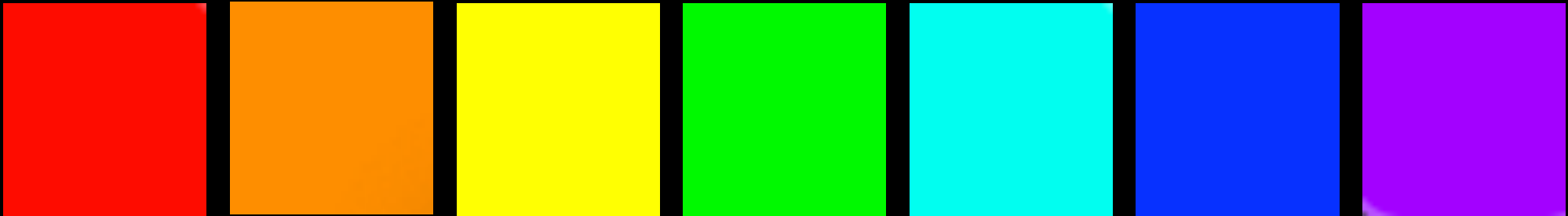


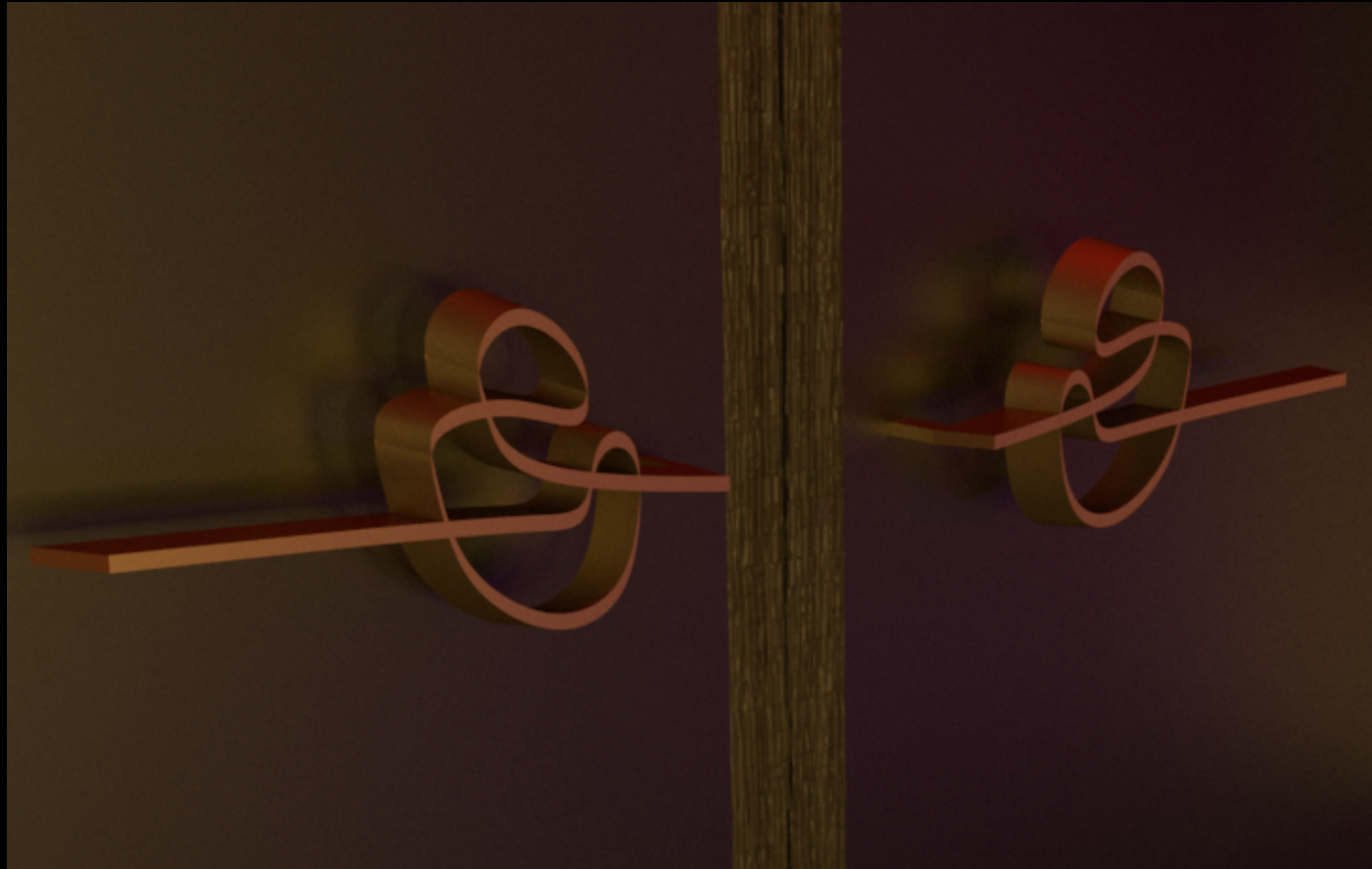
Coloured Acrylic Light Boxes



Coloured LED Light
Neon Effect Directional

Colour Palette

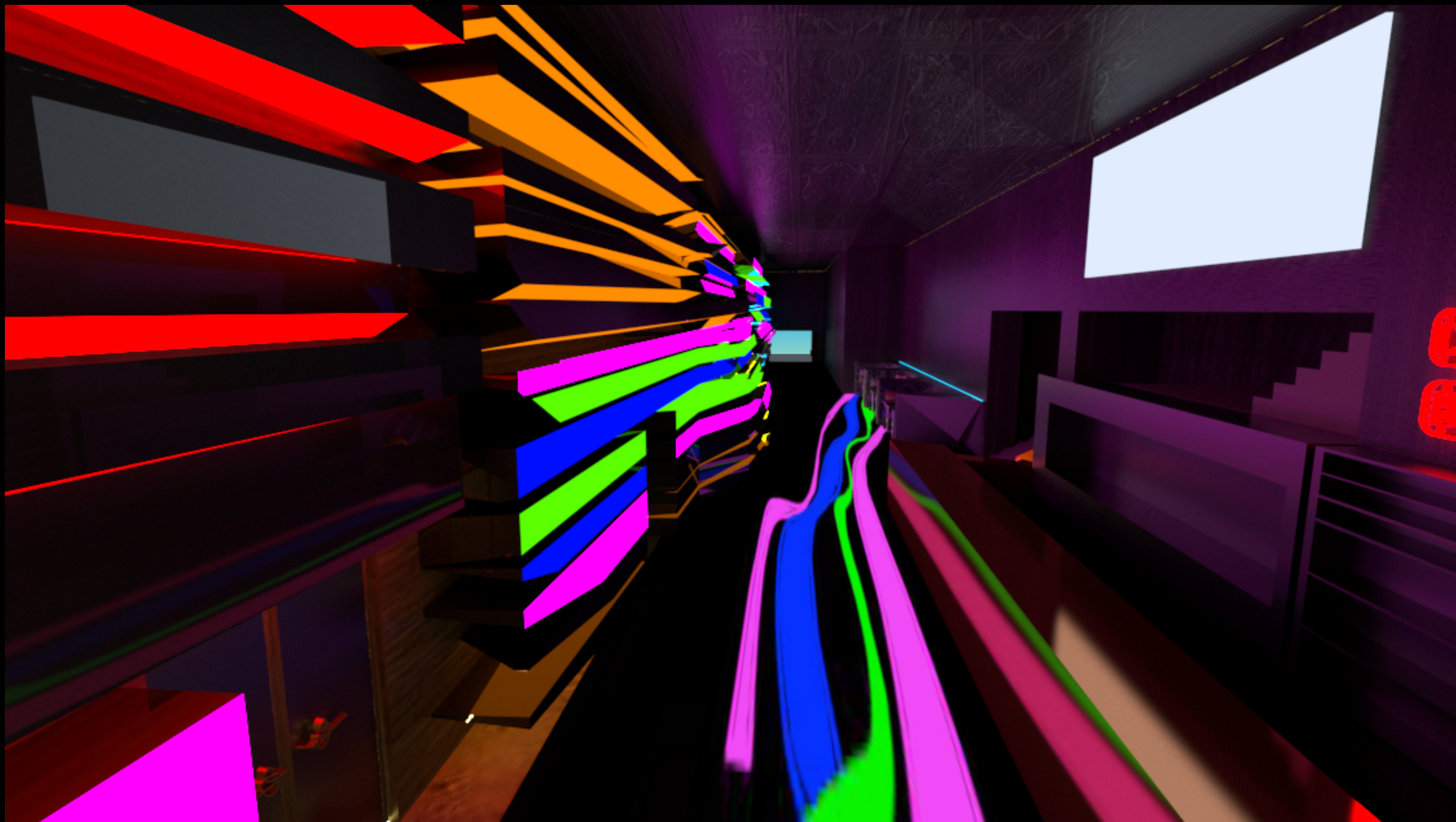




Door Handle Detail Small Doors



Door Handle Detail Grand Doors



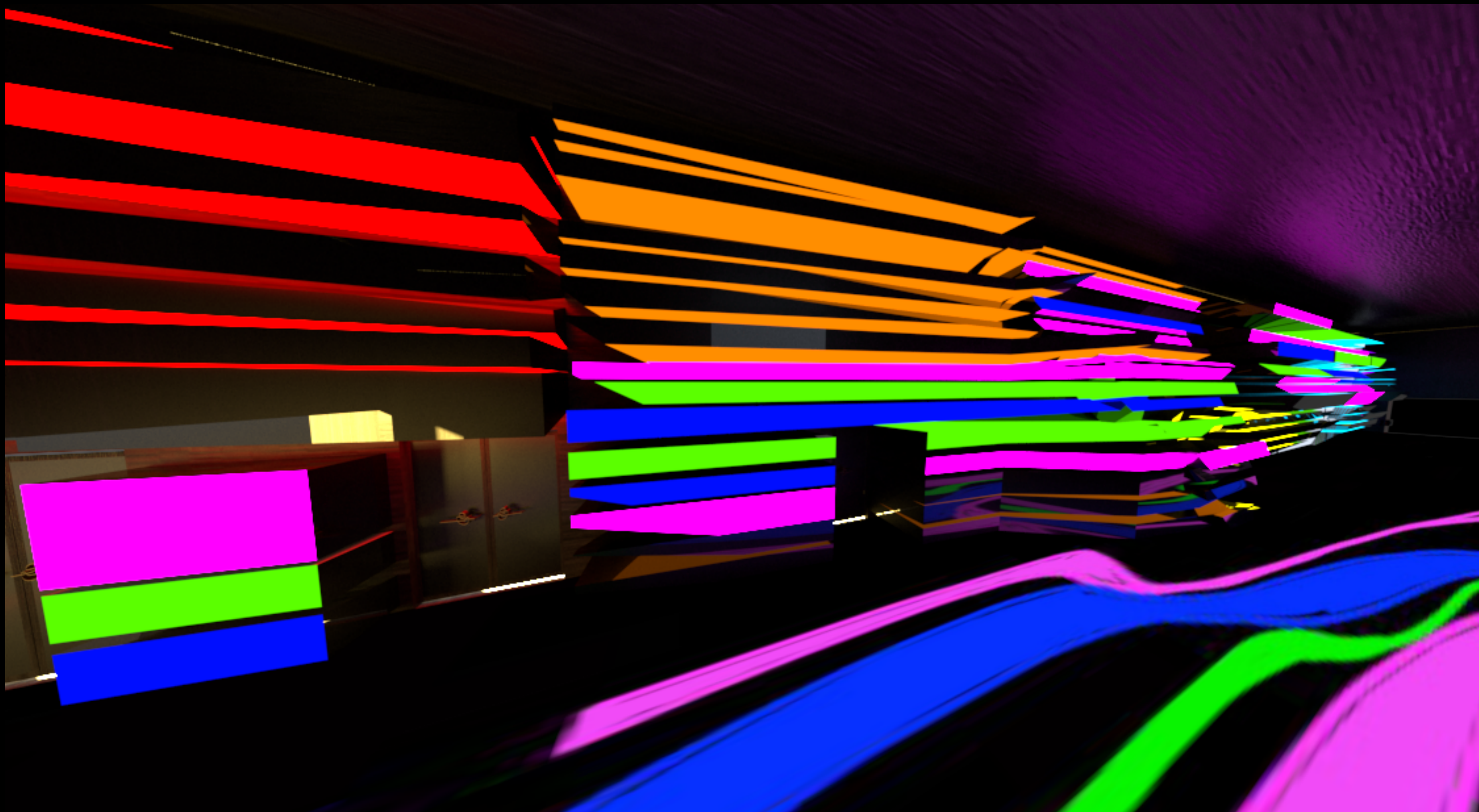
Looking down the walkway installation towards Queen Street.



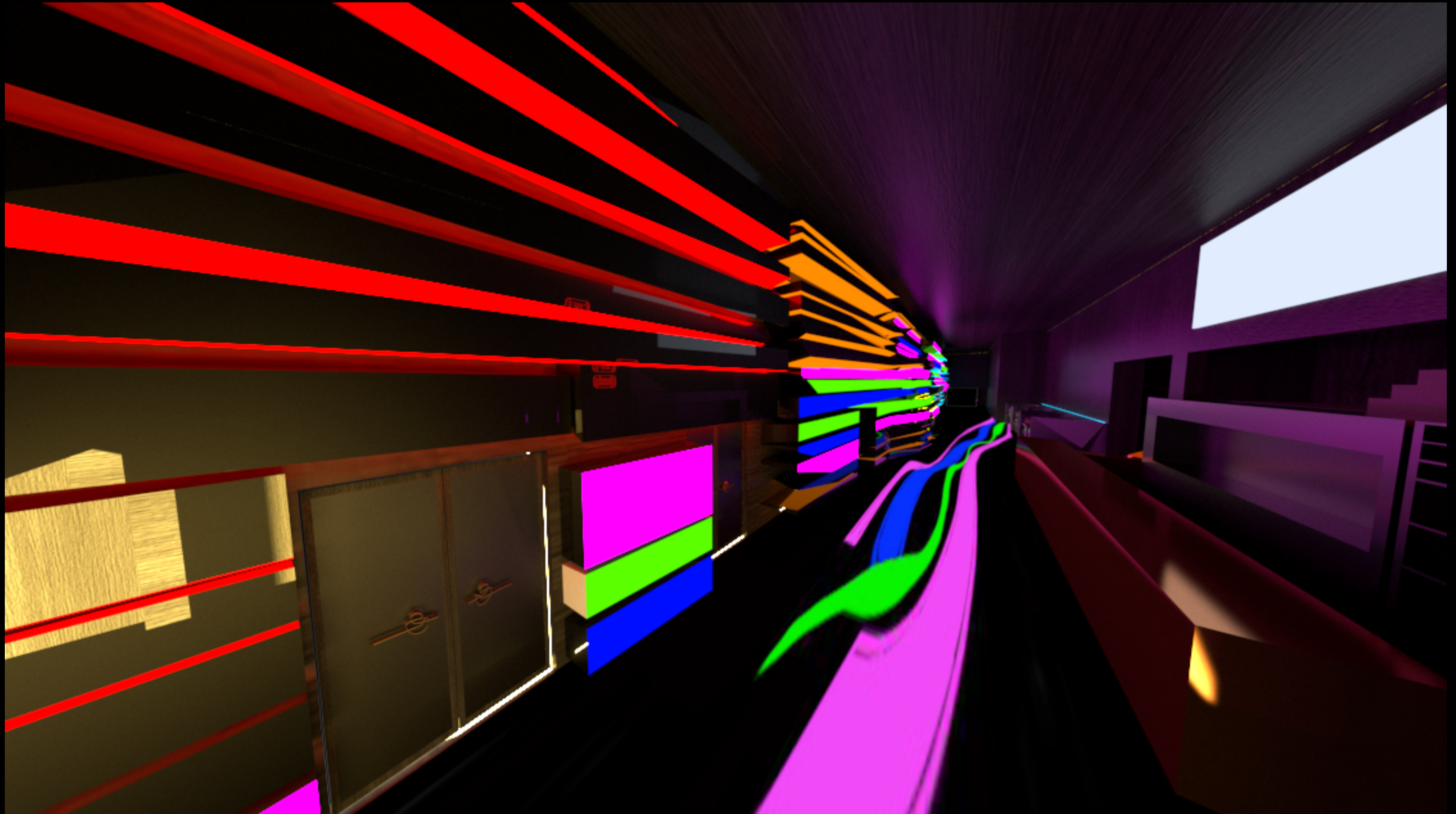
Perspective looking towards woman standing in line at the café.

CAFE
BAR

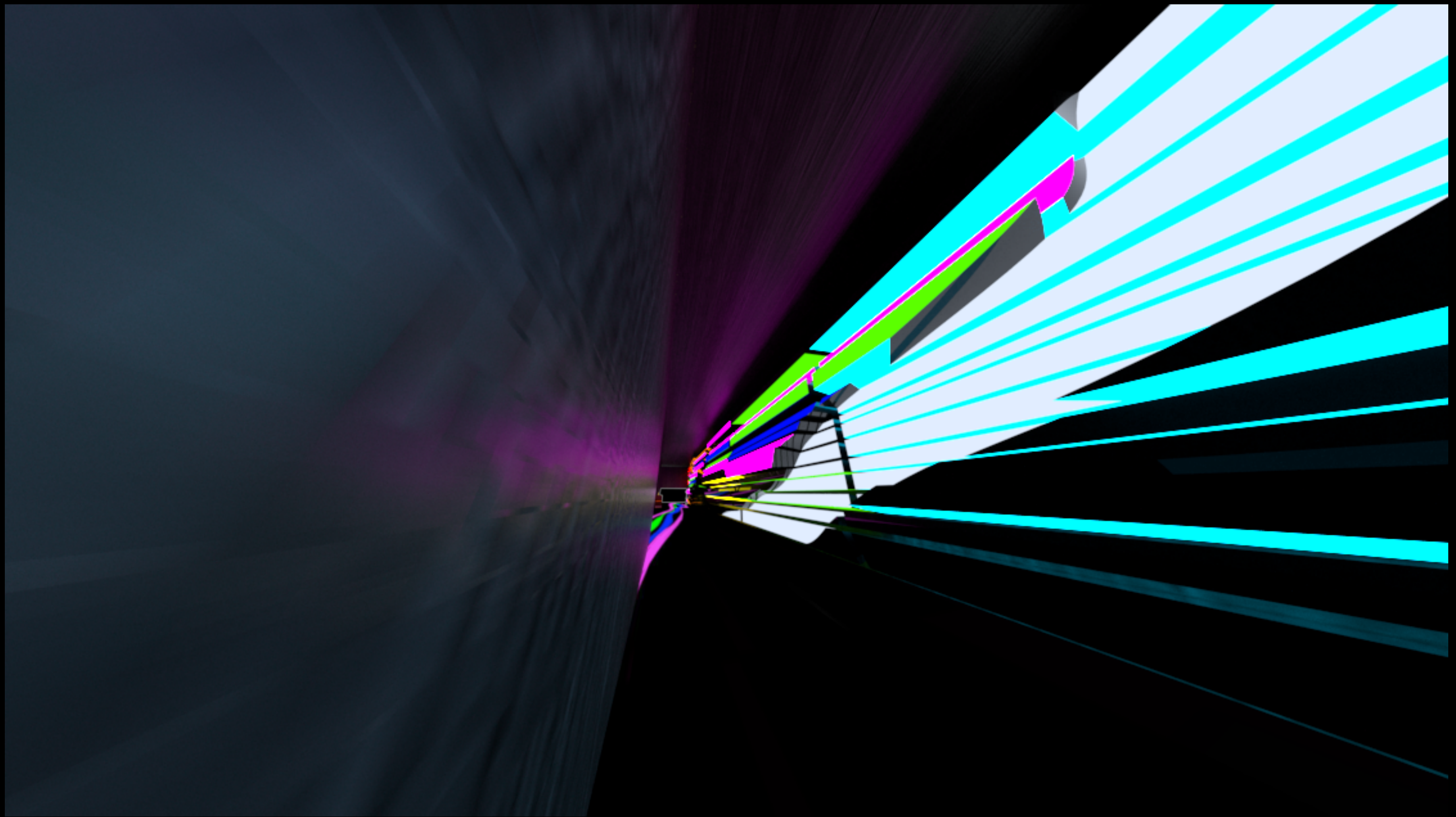
BAR



Looking towards LED light installation.



From Lorne Street towards Queen Street.



Entry from Queen Street.